

FILTAIR® MWX Series

Issued June 2012 • Index No. AY/3.0



Quick Specs

Industrial Applications

Manufacturing and Fabrication
Maintenance and Repair Operations
School and Training Facilities

Processes

Stick (SMAW)
Flux-Cored (FCAW)
MIG (GMAW)
TIG (GTAW)

Filter Media 490 ft.² (45.52 m²)

Accu-Rated™ Airflow 875 CFM (413 L/sec.)

Sound Level Approximately 70 dBA at 5 ft. (1.5 m)

Motor Specifications 1 HP, 3450 RPM

Input Power 115 V/1-Phase/60 Hz at approximately 11.9 A

Dimensions H: 34.75 in. (883 mm)

W: 31.75 in. (806 mm)

D: 48 in. (1219 mm)

Extraction Arm 8-in. (203 mm) diameter
7-, 10-, and 12-ft. lengths
(2.1, 3 and 3.7 m)

Weight MWX-S 300 lb. (136 kg)
MWX-D 238 lb. (108 kg)

The Power of Blue.®

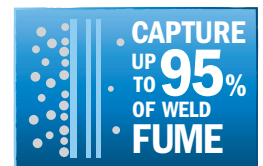
Mobile fume extraction systems designed specifically for welding.

The powerful high-volume system with a MERV 15 high-efficiency filter is ideal for fabrication shops, manufacturing, repair work and training centers where mobility is needed.

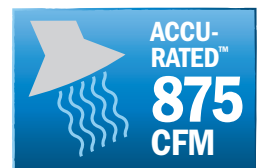
Have a certified industrial hygienist test the air in your facility to determine equipment requirements and ensure adequate protection from contaminants.



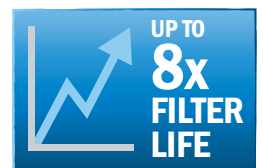
Disposable filter (MWX-D) and self-cleaning filter (MWX-S) models available.



Standard high-efficiency filter designed to capture weld fume



Better suction for a cleaner work space



FitTek™ XL cleanable filters last longer



Fume extractor is warranted for 1 year, parts and labor.



Meets both UL and CSA standards.



Miller Electric Mfg. Co.
An Illinois Tool Works Company
1635 West Spencer Street
Appleton, WI 54914 USA

Equipment Sales US and Canada
Phone: 866-931-9730
FAX: 800-637-2315
International Phone: 920-735-4554
International FAX: 920-735-4125

Website
MillerWelds.com



Cleaner Air with FilTek XL Filters

The FilTek XL filter's higher MERV rating means unrivaled filtering performance.

Filters are rated on a MERV scale, which measures filter efficiency based on particle count. MERV ratings range from 1–16, with 16 being the best at filtering small particles—such as those found in weld fumes. The vast majority of weld fumes are less than one micron in diameter, or roughly 1/100th the width of a human hair.

Filters in common air filtration systems often have MERV ratings between 7–11. FilTek XL filters are rated at class-leading MERV 15–16 to capture up to 95 percent of weld fume particulates.

Filter Media Performance Summary

FilTek XL filters have the highest efficiencies and lowest pressure drops to capture better, last longer, and lower operating costs.

MERV Comparison

Applicable Weld Fume MERV Rating Categories ¹	Particle Size Range Efficiency % ²		
	0.3 to 1 µm	1 to 3 µm	3 to 10 µm
10	Not Rated	50–65%	85%
11	Not Rated	65–80%	85%
12	Not Rated	80–90%	85%
13	<75%	90%	90%
14	75–85%	90%	90%
15 Miller® FilTek XL	85–95%	90%	90%
16 Miller® FilTek XL	95%	90%	90%
Percentage of Weld Fume Particle Size ³	75–95%	15%	10%

¹American Society of Heating, Refrigeration and Air Conditioning Engineers (ASHRAE) 52.2

²National Air Filtration Association (NAFA) Guide

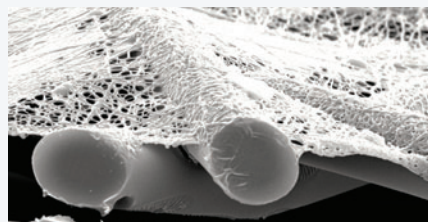
³Jenkins, Pierce, Edgar, Particle Size Distribution of GMAW and FCAW

Filter Media Type	Weld Fume Capture Efficiency	Pressure Drop	Relative Cost
Cellulose	Very Low	Low	\$
Cellulose Blend	Low	Moderate	\$
Spunbond Polyester	Moderate/high	High	\$\$\$
Meltblown Composite	High	High	\$\$
Miller FilTek XL	High	Low	\$\$

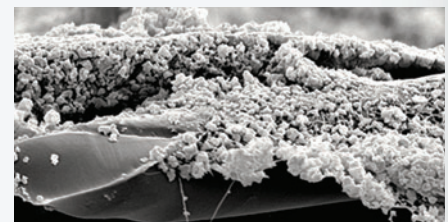
FilTek XL filters provide high efficiencies and low operating pressure to out-filter, outperform, and outlast all the rest.

Not Just Filters — FilTek XL Filters

The FilTek XL filter media design results in extended filter life, higher efficiency and stronger suction, resulting in a cleaner work space and improved weld fume capture. Filter media from FilTek XL high-volume filters are made up of a durable substrate with an engineered fiber designed to capture even the smallest of weld fume particles, while maintaining the highest level of efficiency.



Clean FilTek XL media



Surface loaded FilTek XL media (substrate still clean)

The FILTAIR® Advantage

Accu-Rated™ Performance Summary

- The MWX design and ratings are specific to weld fume capture.
- While most extractors have CFM rated at the blower, the Miller® MWX is rated at 875 CFM at the capture hood which is where suction is needed to capture weld fume.
- The MWX is designed to exceed the ACGIH recommended weld fume transport velocity of 2000 feet per minute.

This results in the MWX having stronger suction power for a cleaner work space.

Easy-to-operate extraction arm with external adjustments so air can pass through with less airflow resistance, giving you stronger CFM (airflow). It offers reliable and accurate positioning across the full range of motion of the arm, as well as easy adjustment and maintenance to ensure long-lasting operation. Pre-assembled extraction arms are available in 7-, 10- and 12-foot lengths.

NEW! Preassembled arms for fast, easy setup.

Built-in tool tray provides workers with a convenient area to place their tools without them rolling off of the unit.

Exclusive hinged filter hatch features a convenient locking mechanism for easy access to the filter and tool-free replacement.

Metal cabinet design ensures long-lasting durability in a manufacturing environment.

Large rear wheels allow for easy movement over weld cables and from one work cell to another.

Particulate disposal bin (MWX-S only) provides easy and convenient access to empty out collected particulate. Handle releases drawer allowing it to slide out.

Convenient air connection (MWX-S only) for dry compressed air supply.

Note: Compressed air required to operate cleaning mechanism.

Durable bellmouth-shaped hood features a convenient 360 degree rotation for unlimited positioning. One of the largest in the industry, FILTAIR's extraction hood captures weld fumes at a greater distance from the source than other hood designs. This also means less hood adjustments for longer welds.

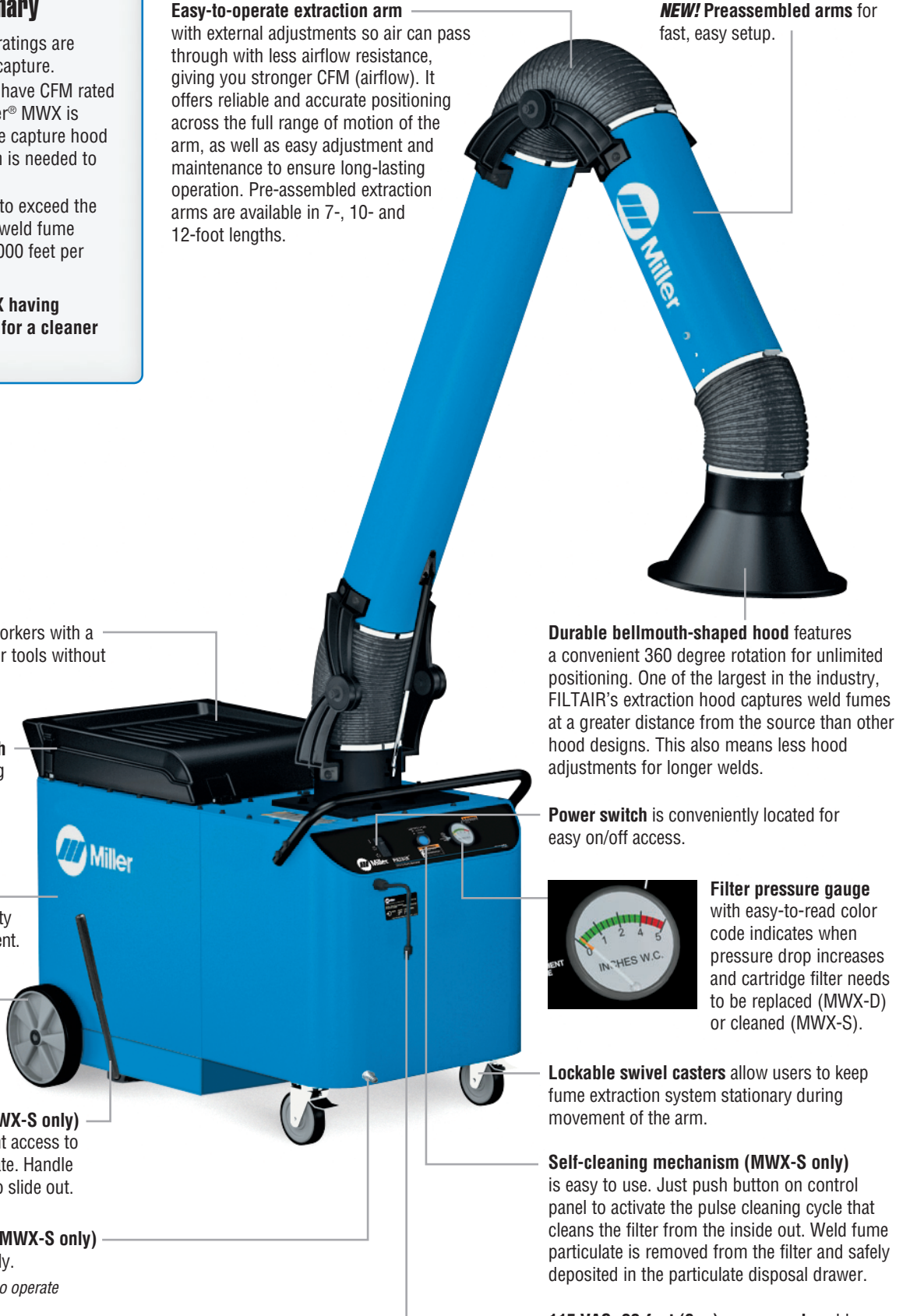
Power switch is conveniently located for easy on/off access.

Filter pressure gauge with easy-to-read color code indicates when pressure drop increases and cartridge filter needs to be replaced (MWX-D) or cleaned (MWX-S).

Lockable swivel casters allow users to keep fume extraction system stationary during movement of the arm.

Self-cleaning mechanism (MWX-S only) is easy to use. Just push button on control panel to activate the pulse cleaning cycle that cleans the filter from the inside out. Weld fume particulate is removed from the filter and safely deposited in the particulate disposal drawer.

115 VAC, 20-foot (6 m) power cord enables welders to freely move fume extractor.



Specifications (Subject to change without notice.)

Filter Media	Accu-Rated™ Airflow	Extraction Arm Diameter	Sound Level	Motor	Power	Dimensions	Net Weight	Shipping Weight
490 ft. ² (45.52 m ²)	875 CFM (413 L/sec.)	8 in. (203 mm)	Approximately 70 dBA at 5 ft. (1.5 m)	1 HP, 3450 RPM	115 V/1-Phase/60 Hz at approximately 11.9 A	H: 34.75 in (883 mm) W: 31.75 in (806 mm) D: 48 in (1219 mm)	MWX-D 238 lb. (108 kg) MWX-S 300 lb. (136 kg)	MWX-D 285 lb. (129 kg) MWX-S 340 lb. (154 kg)

Genuine Miller® Accessories



Replacement Filter

#300 539

Disposable

#300 540

Self-cleaning
(shown)



MWX Hood Light with Arc Sensor

#300 689 Field

The hood light with arc sensor illuminates the welding zone and enables the fume extractor to start automatically when welding begins.

Ordering Information

Equipment and Options	Stock No.	Description	Qty.	Price
MWX-D Packages				
(Includes mobile extractor, high-efficiency filter and arm.)	#951 507	With 7-ft. extraction arm and disposable filter		
	#951 508	With 10-ft. extraction arm and disposable filter		
	#951 509	With 12-ft. extraction arm and disposable filter		
MWX-S Packages				
(Includes mobile extractor, high-efficiency filter and arm.)	#951 510	With 7-ft. extraction arm and self-cleaning filter		
	#951 511	With 10-ft. extraction arm and self-cleaning filter		
	#951 512	With 12-ft. extraction arm and self-cleaning filter		
Base Components				
SA-807	#300 977	7-ft. pre-assembled extraction arm		
SA-810	#300 978	10-ft. pre-assembled extraction arm		
SA-812	#300 979	12-ft. pre-assembled extraction arm		
Replacement Filters				
Disposable Filter	#300 539			
Self-Cleaning Filter	#300 540			
Accessories				
MWX Hood Light with Arc Sensor	#300 689	Field		

Date:

Total Quoted Price:

**Please call toll-free 855-FILTAIR (855-345-8247)
for information on fume extraction solutions.**

Distributed by:

